



WHITCHURCH GARDENS

EDGWARE, HA8 6PG

£730,000
FREEHOLD

Welcome to this charming detached house in the highly sought-after Whitchurch Gardens, Edgware. This spacious family home offers incredible potential, providing the perfect opportunity to modernise and personalise to your taste.

Key Features:

Generous Living Spaces: Featuring a large kitchen, dining room, and a cosy living room ideal for family gatherings.

Well-Sized Bedrooms: Ample space for comfortable family living with well-proportioned bedrooms.



TAYLOR HAWKINS
Estate Agents
0208 958 2222 / Taylor-hawkins.co.uk

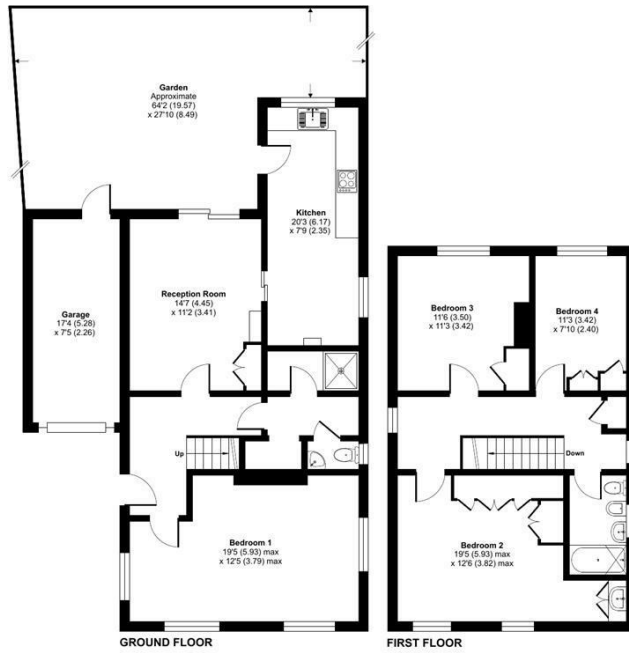
Whitchurch Gardens, Edgware, HA8

Approximate Area = 1344 sq ft / 124.8 sq m

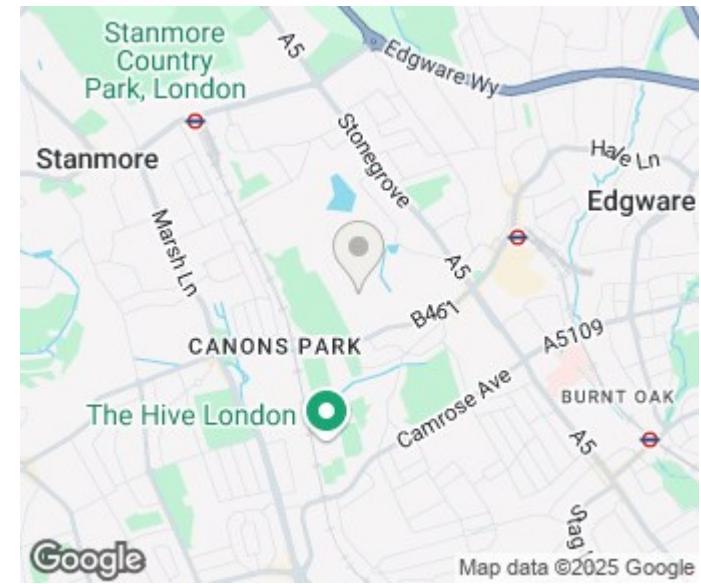
Garage = 128 sq ft / 11.8 sq m

Total = 1472 sq ft / 136.6 sq m

For identification only - Not to scale



Floor plan produced in accordance with RICS Property Measurement Standards incorporating International Property Measurement Standards (IPMS2 Residential). © ricscom 2024. Produced for Taylor Hawkins. REF: 1148465



Energy Efficiency Rating		
	Current	Potential
Very energy efficient - lower running costs		
(92 plus) A		
(81-91) B		
(69-80) C		
(55-68) D		
(39-54) E		
(21-38) F		
(1-20) G		
Not energy efficient - higher running costs		
England & Wales	EU Directive 2002/91/EC	

Agents Note: Whilst every care has been taken to prepare these particulars, they are for guidance purposes only. All measurements are approximate and are for general guidance purposes only and whilst every care has been taken to ensure their accuracy, they should not be relied upon and potential buyers/tenants are advised to recheck the measurements

Edgware Sales
58 Edgware Way
Edgware
Middlesex
HA8 8DJ

020 8958 2222
property@taylorhawkins.co.uk
<https://taylorhawkins.co.uk/>



TAYLOR HAWKINS
Estate Agents
0208 958 2222 / Taylorhawkins.co.uk